

Drill Collar

Material AISI4145HM, Non Mag(DNM110)

Type Slick, Spiral

Sizes and Mechanical Properties

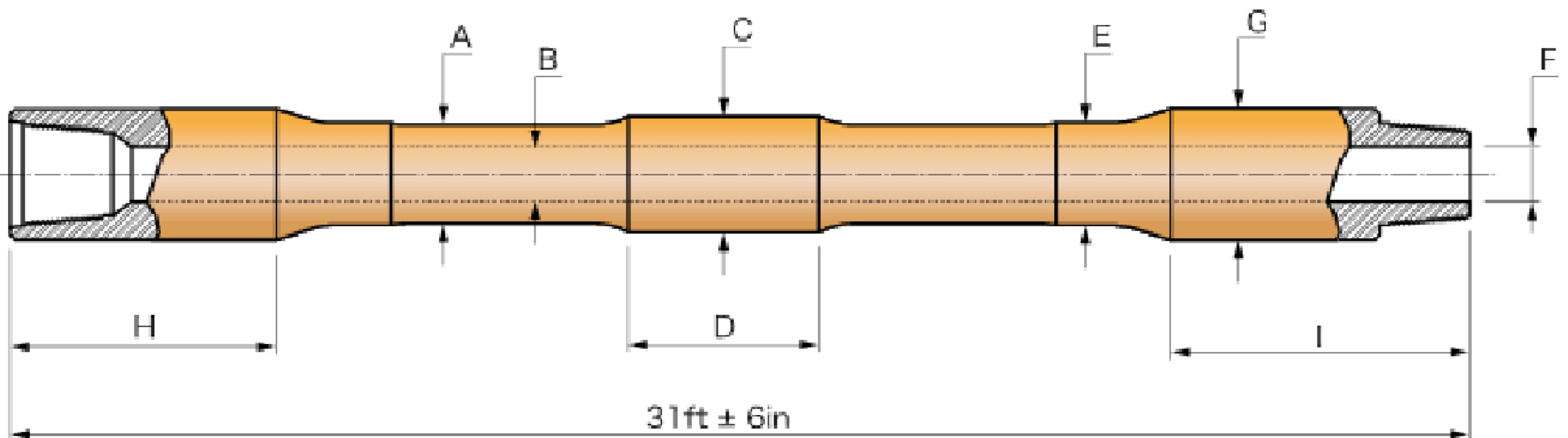
Drill Collar Number	Outside Diameter D inch (mm)	Bore Diameter d inch (mm)	B.S.R Round Number	Tensile Strength				Impact Value	Hardness
				Length,ft ±6in	Yield Strength	Tensile Strength	Elongation		
				ft	(0.25% offset)			Charpy V	Brinell
NC23-31	3 1/8 (79.4)	1 1/4 (31.8)	2.57 : 1	30	min. 110,000 psi (≥758N/mm ²)	min. 140,000 psi (≥965N/mm ²)	min. 13%	min. 59 ft-lbs (≥80J)	285~341
NC26-35 (2-3/8 IF)	3 1/2 (88.9)	1 1/2 (38.1)	2.42 : 1	30					
NC31-41 (2 7/8 IF)	4 1/4 (104.8)	2 (50.8)	2.43 : 1	30 or 31					
NC35-47	4 3/4 (120.7)	2 (50.8)	2.58 : 1	30 or 31					
NC38-50 (3 1/2 IF)	5 (127.0)	2 1/4 (57.2)	2.38 : 1	30 or 31					
NC44-60	6 (152.4)	2 1/4 (57.2)	2.49 : 1	30 or 31					
NC44-60	6 (152.4)	2 13/16 (71.4)	2.84 : 1	30 or 31					
NC44-62	6 1/4 (158.8)	2 1/4 (57.2)	2.91 : 1	30 or 31					
NC46-62 (4 IF)	6 1/4 (158.8)	2 13/16 (71.4)	2.63 : 1	30 or 31					
NC46-65 (4 IF)	6 1/2 (165.1)	2 1/4 (57.2)	2.76 : 1	30 or 31					
NC46-65 (4 IF)	6 1/2 (165.1)	2 13/16 (71.4)	3.05 : 1	30 or 31					
NC46-67 (4 IF)	6 3/4 (171.5)	2 1/4 (57.2)	3.18 : 1	30 or 31					
NC50-67 (4 1/2 IF)	6 3/4 (171.5)	2 13/16 (71.4)	2.37 : 1	30 or 31					
NC50-70 (4 1/2 IF)	7 (177.8)	2 1/4 (57.2)	2.54 : 1	30 or 31	min. 100,000 psi (≥689N/mm ²)	min. 135,000 psi (≥931N/mm ²)	min. 13%	min. 59 ft-lbs (≥80J)	285~341
NC50-70 (4 1/2 IF)	7 (177.8)	2 13/16 (71.4)	2.27 : 1	30 or 31					
NC50-72 (4 1/2 IF)	7 1/4 (184.2)	2 13/16 (71.4)	3.12 : 1	30 or 31					
NC56-77	7 3/4 (196.9)	2 13/16 (71.4)	2.70 : 1	30 or 31					
NC56-80	8 (203.2)	2 13/16 (71.4)	3.02 : 1	30 or 31					
6 5/8REG	8 1/4 (209.6)	2 13/16 (71.4)	2.93 : 1	30 or 31					
NC61-90	9 (228.6)	2 13/16 (71.4)	3.17 : 1	30 or 31					
7 5/8REG	9 1/2 (241.3)	3 (76.2)	2.81 : 1	30 or 31					
NC70-97	9 3/4 (247.7)	3 (76.2)	2.57 : 1	30 or 31					
NC70-100	10 (254.0)	3 (76.2)	2.81 : 1	30 or 31					
8 5/8 REG	11 (279.4)	3 (76.2)	2.84 : 1	30 or 31					

Heavy Weight Drill Pipe

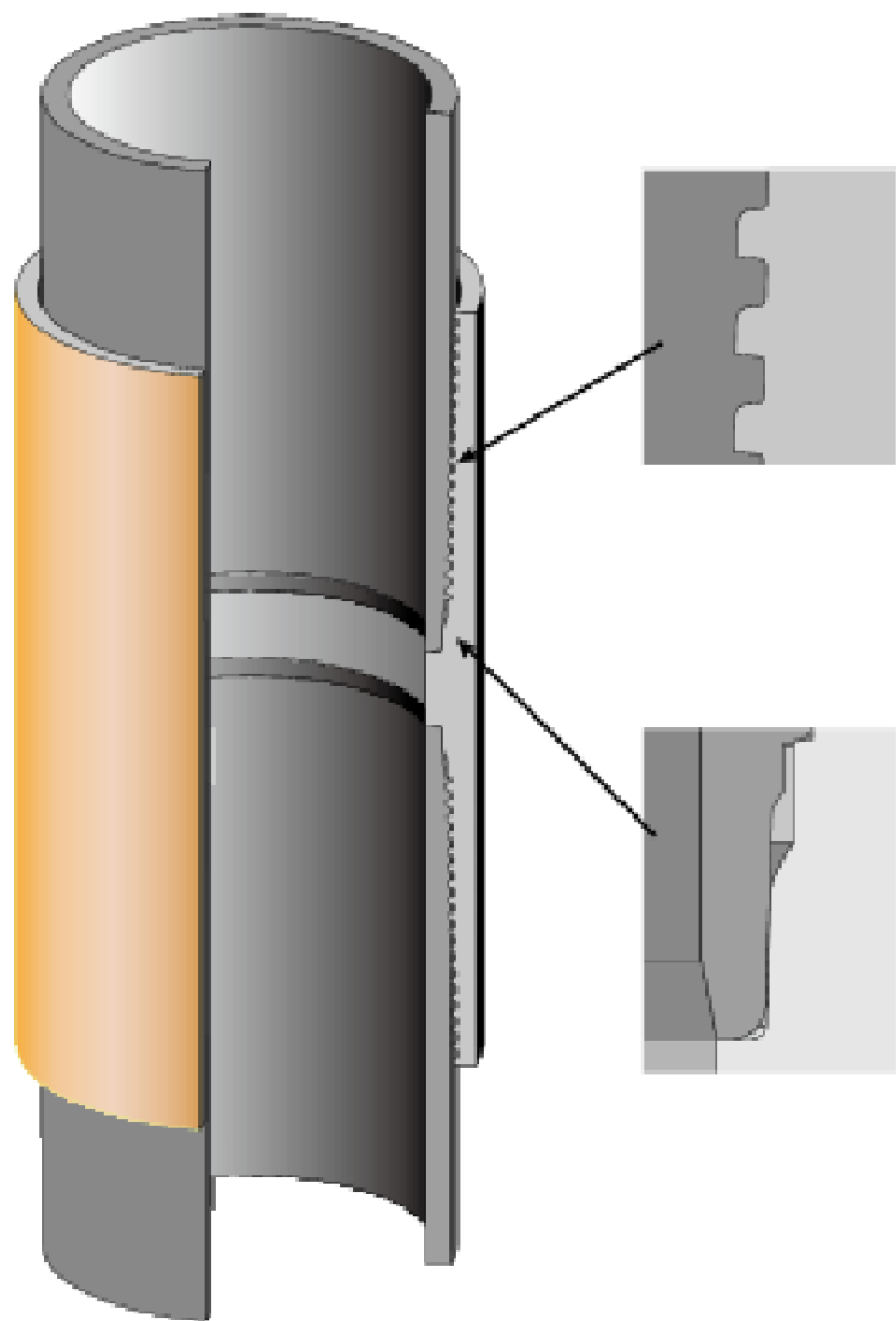
Type Integral Type and Friction Weld Type
 Grade Integral Type AISI4145HM
 Friction Weld Type Tool Joint : AISI 4145HM
 Tube : AISI 1340 or Equivalent

Sizes

Size		Tube				Tool Joint					Min Drift Dia.
		Tube ID	Center Upset Dia.	Upset Length	Max Elevator Upset	Connection Number	Tool Joint OD	Tool Joint ID	Pin Length	Box Length	
A		B	C	D	E		G	F	I	H	
in	mm	in	in	in	in		in	in	in	in	
3 1/2	88.9	2 1/4	4	25	3 7/8	NC38	4 3/4 (4 7/8) (5)	2 1/4	27	21	2
		2 1/16						2 1/16			1 13/16
4	101.6	2 1/2	4 1/2	25	4 3/16	NC40	5 1/4	2 1/2	27	21	2 1/4
		2 9/16						2 9/16			2 5/16
4 1/2	114.3	2 11/16	5	25	4 11/16	NC46	6 1/4	2 11/16	27	21	2 7/16
		2 3/4						2 3/4			2 1/2
		2 13/16						2 13/16			2 9/16
5	127.0	3	5 1/2	25	5 1/8	NC50	6 5/8	3	27	21	2 3/4
5 1/2	139.7	3 1/4	6	25	5 11/16	5 1/2FH	7 (7 1/4) (7 1/2)	3 1/4	27	21	3
		3 3/8						3 3/8			3 1/8
		3 7/8						3 7/8			3 5/8
		4						4			3 3/4
5 7/8	149.2	4	6 3/8	25	6	5 1/2FH	7	4	27	21	3 3/4
6 5/8	168.3	4	7 1/8	25	6 15/16	6 5/8FH	8 (8 1/4) (8 1/2)	4	27	21	3 3/4
		4 1/2						4 1/2			4 1/4
		5						5			4 3/4



PMC Connection



Design Concept

- Threaded and Coupled Connection applied
Non-upset Pipe
- Two Metal to Metal Seals
Main Seal with Sliding Type
Internal torque stop seal
- Excellent sealing capability
- Fully Inter-Changeable to BTC (API Butress Connection)
Thread Form same as API-BTC
- Positive Torque Stop in Internal Shoulder
- Internal Flush Smooth
- Easy Repair Connection
BTC Threading Insert can be used.
- Tapered and Run-out Type Thread
Thread Taper 1/16 on Diameter

PMC Casing Size

OD NOMINAL inch	OD		WEIGH lbs/ft	Wall		NOM. ID		DRIFT DIA		Coupling OD mm	Length mm	Make-up Pipe Section	
	inch	mm		inch	mm	inch	mm	inch	mm			mm	Sq.in
4 1/2	4.500	114.3	11.60	0.250	6.35	4.000	101.60	3.875	98.43	127.00	234.70	107.35	3.338
	4.500	114.3	13.50	0.291	7.39	3.918	99.52	3.795	96.39			3.848	
	4.500	114.3	15.10	0.337	8.56	3.826	97.18	3.701	94.01			4.407	
	4.500	114.3	16.90	0.380	9.65	3.740	95.00	3.615	91.82			4.918	
	4.500	114.3	21.60	0.500	12.70	3.500	88.90	3.375	85.73			6.283	
5	5.000	127.0	15.00	0.296	7.52	4.408	111.96	4.283	108.79	141.30	235.90	107.98	4.374
	5.000	127.0	18.00	0.362	9.19	4.276	108.61	4.151	105.44			5.275	
	5.000	127.0	20.30	0.408	10.36	4.184	106.27	4.059	103.10			5.886	
	5.000	127.0	23.20	0.478	12.14	4.044	102.72	3.919	99.54			6.791	
	5.000	127.0	24.20	0.500	12.70	4.000	101.60	3.875	98.43			7.069	
5 1/2	5.500	139.7	15.50	0.275	6.99	4.950	125.73	4.825	122.56	153.70	240.70	110.37	4.514
	5.500	139.7	17.00	0.304	7.72	4.892	124.26	4.767	121.08			4.962	
	5.500	139.7	20.00	0.361	9.17	4.778	121.36	4.653	118.19			5.828	
	5.500	139.7	23.00	0.415	10.54	4.670	118.62	4.545	115.44			6.630	
	5.500	139.7	26.00	0.476	12.09	4.548	115.52	4.423	112.34			7.513	
6 5/8	6.625	168.3	20.00	0.288	7.32	6.049	153.64	5.924	150.47	187.70	250.20	115.13	5.734
	6.625	168.3	24.00	0.352	8.94	5.921	150.39	5.796	147.22			6.937	
	6.625	168.3	28.00	0.417	10.59	5.791	147.09	5.666	143.92			8.133	
	6.625	168.3	32.00	0.475	12.07	5.675	144.15	5.550	140.97			9.177	
7	7.000	177.8	23.00	0.317	8.05	6.366	161.70	6.241	158.52	194.50	261.40	120.70	6.656
	7.000	177.8	26.00	0.362	9.19	6.276	159.41	6.151	156.24			7.549	
	7.000	177.8	29.00	0.408	10.36	6.184	157.07	6.059	153.90			8.449	
	7.000	177.8	32.00	0.453	11.51	6.094	154.79	5.969	151.61			9.317	
	7.000	177.8	35.00	0.498	12.65	6.004	152.50	5.879	149.33			10.172	
	7.000	177.8	38.00	0.540	13.72	5.920	150.37	5.795	147.19			10.959	
	7.000	177.8	41.00	0.590	14.99	5.820	147.83	5.695	144.65			11.881	
7 5/8	7.625	193.7	26.40	0.328	8.33	6.969	177.01	6.844	173.84	215.90	270.90	125.46	7.519
	7.625	193.7	29.70	0.375	9.53	6.875	174.63	6.750	171.45			8.541	
	7.625	193.7	33.70	0.430	10.92	6.765	171.83	6.640	168.66			9.720	
	7.625	193.7	39.00	0.500	12.70	6.625	168.28	6.500	165.10			11.192	
	7.625	193.7	42.80	0.562	14.27	6.501	165.13	6.376	161.95			12.470	
	7.625	193.7	45.30	0.595	15.11	6.435	163.45	6.310	160.27			13.141	
	7.625	193.7	47.10	0.624	15.85	6.377	161.98	6.252	158.80			13.724	
8 5/8	8.625	219.1	28.0	0.304	7.72	8.017	203.63	7.894	200.49	244.50	277.20	128.63	7.947
	8.625	219.1	32.0	0.352	8.94	7.921	201.19	7.798	198.06			9.149	
	8.625	219.1	36.0	0.400	10.16	7.825	198.76	7.702	195.62			10.336	
	8.625	219.1	40.0	0.450	11.43	7.725	196.22	7.602	193.08			11.557	
	8.625	219.1	44.0	0.500	12.70	7.625	193.68	7.502	190.54			12.763	
	8.625	219.1	49.0	0.557	14.15	7.511	190.78	7.388	187.64			14.118	
	8.625	219.1	52.0	0.595	15.11	7.435	188.85	7.312	185.71			15.010	
9 5/8	9.625	244.5	36.0	0.352	8.94	8.921	226.59	8.765	222.62	269.90	277.20	128.63	10.254
	9.625	244.5	40.0	0.395	10.03	8.835	224.41	8.679	220.44			11.454	
	9.625	244.5	43.5	0.435	11.05	8.755	222.38	8.599	218.41			12.559	
	9.625	244.5	47.0	0.472	11.99	8.681	220.50	8.525	216.53			13.572	
	9.625	244.5	53.5	0.545	13.84	8.535	216.79	8.379	212.82			15.547	
	9.625	244.5	58.4	0.595	15.11	8.435	214.25	8.279	210.28			16.879	
	9.625	244.5	61.1	0.625	15.88	8.375	212.73	8.219	208.76			17.672	
10 3/4	10.750	273.1	40.5	0.350	8.89	10.050	255.27	9.894	251.30	298.50	277.20	128.63	11.435
	10.750	273.1	45.5	0.400	10.16	9.950	252.73	9.794	248.76			13.006	
	10.750	273.1	51.0	0.450	11.43	9.850	250.19	9.694	246.22			14.561	
	10.750	273.1	55.5	0.495	12.57	9.760	247.90	9.604	243.94			15.947	
	10.750	273.1	60.7	0.545	13.84	9.660	245.36	9.504	241.40			17.473	
	10.750	273.1	65.7	0.595	15.11	9.560	242.82	9.404	238.86			18.982	
11 3/4	11.750	298.5	47.0	0.375	9.53	11.000	279.40	10.844	275.43	323.80	277.20	128.63	13.401
	11.750	298.5	54.0	0.435	11.05	10.880	276.35	10.724	272.38			15.463	
	11.750	298.5	60.0	0.489	12.42	10.772	273.61	10.616	269.64			17.300	
	11.750	298.5	65.0	0.534	13.56	10.682	271.32	10.526	267.35			18.816	
13 3/8	13.375	339.7	54.5	0.380	9.65	12.615	320.42	12.459	316.45	365.10	277.20	128.63	15.514
	13.375	339.7	61.0	0.430	10.92	12.515	317.88	12.359	313.91			17.487	
	13.375	339.7	68.0	0.480	12.19	12.415	315.34	12.259	311.37			19.445	
	13.375	339.7	72.0	0.514	13.06	12.347	313.61	12.191	309.65			20.768	

Casing

Sizes and Grades

Outside Diameter	Nominal Weight	Outside Diameter D	Wall Thickness T		Type of End Finish					
					Grade					
					H-40	J-55 K-55	L-80 C-95	N-80	C-90 T-95	P-110
in	lb/ft	mm	in	mm						
4 1/2	9.50	114.3	0.205	5.21	S	S	-	-	-	-
	10.50	114.3	0.224	5.69	-	SB	-	-	-	-
	11.60	114.3	0.250	6.35	-	SLB	LB	LB	LB	LB
	13.50	114.3	0.290	7.37	-	-	LB	LB	LB	LB
5	11.50	127.0	0.220	5.59	-	S	-	-	-	-
	13.00	127.0	0.253	6.43	-	SLB	-	-	-	-
	15.00	127.0	0.296	7.52	-	SLB	LB	LB	LB	LB
	18.00	127.0	0.362	9.19	-	-	LB	LB	LB	LB
	21.40	127.0	0.437	11.10	-	-	LB	LB	LB	LB
	23.20	127.0	0.478	12.14	-	-	LB	LB	LB	LB
	24.10	127.0	0.500	12.70	-	-	LB	LB	LB	LB
5 1/2	14.00	139.7	0.244	6.20	S	S	-	-	-	-
	15.50	139.7	0.275	6.99	-	SLB	-	-	-	-
	17.00	139.7	0.304	7.72	-	SLB	LB	LB	LB	LB
	20.00	139.7	0.361	9.17	-	-	LB	LB	LB	LB
	23.00	139.7	0.415	10.54	-	-	LB	LB	LB	LB
6 5/8	20.00	168.3	0.288	7.32	S	SLB	-	-	-	-
	24.00	168.3	0.352	8.94	-	SLB	LB	LB	LB	LB
	28.00	168.3	0.417	10.59	-	-	LB	LB	LB	LB
	32.00	168.3	0.475	12.07	-	-	LB	LB	LB	LB
7	17.00	177.8	0.231	5.87	S	-	-	-	-	-
	20.00	177.8	0.272	6.91	S	S	-	-	-	-
	23.00	177.8	0.317	8.05	-	SLB	LB	LB	LB	-
	26.00	177.8	0.362	9.19	-	SLB	LB	LB	LB	LB
	29.00	177.8	0.408	10.36	-	-	LB	LB	LB	LB
	32.00	177.8	0.453	11.51	-	-	LB	LB	LB	LB
	35.00	177.8	0.498	12.65	-	-	LB	LB	LB	LB
	38.00	177.8	0.540	13.72	-	-	LB	LB	LB	LB
7 5/8	24.00	193.7	0.300	7.62	S	-	-	-	-	-
	26.40	193.7	0.328	8.33	-	SLB	LB	LB	LB	-
	29.70	193.7	0.375	9.53	-	-	LB	LB	LB	LB
	33.70	193.7	0.430	10.92	-	-	LB	LB	LB	LB
	39.00	193.7	0.500	12.70	-	-	LB	LB	LB	LB
	42.80	193.7	0.562	14.27	-	-	LB	LB	LB	LB
	45.30	193.7	0.595	15.11	-	-	LB	LB	LB	LB
	47.10	193.7	0.625	15.88	-	-	LB	LB	LB	LB

Sizes and Grades

Outside Diameter	Nominal Weight	Outside Diameter D	Wall Thickness T		Type of End Finish						
					Grade						
					H-40	J-55 K-55	L-80 C-95	N-80	C-90 T-95	P-110	
in	lb/ft	mm	in	mm							
8 5/8	24.00	219.1	0.264	6.71	-	S	-	-	-	-	-
	28.00	219.1	0.304	7.72	S	-	-	-	-	-	-
	32.00	219.1	0.352	8.94	S	SLB	-	-	-	-	-
	36.00	219.1	0.400	10.16	-	SLB	LB	LB	LB	LB	LB
	40.00	219.1	0.450	11.43	-	-	LB	LB	LB	LB	LB
	44.00	219.1	0.500	12.70	-	-	LB	LB	LB	LB	LB
	49.00	219.1	0.557	14.15	-	-	LB	LB	LB	LB	LB
9 5/8	32.30	244.5	0.312	7.92	S	-	-	-	-	-	-
	36.00	244.5	0.352	8.94	S	SLB	-	-	-	-	-
	40.00	244.5	0.395	10.03	-	SLB	LB	LB	LB	LB	LB
	43.50	244.5	0.435	11.05	-	-	LB	LB	LB	LB	LB
	47.00	244.5	0.472	11.99	-	-	LB	LB	LB	LB	LB
	53.50	244.5	0.545	13.84	-	-	LB	LB	LB	LB	LB
	58.40	244.5	0.595	15.11	-	-	LB	LB	LB	LB	LB
10 3/4	32.75	273.1	0.279	7.09	S	-	-	-	-	-	-
	40.50	273.1	0.350	8.89	S	SB	-	-	-	-	-
	45.50	273.1	0.400	10.16	-	SB	-	-	-	-	-
	51.00	273.1	0.450	11.43	-	SB	SB	SB	SB	SB	SB
	55.50	273.1	0.495	12.57	-	-	SB	SB	SB	SB	SB
	60.70	273.1	0.545	13.84	-	-	-	-	SB	SB	SB
	65.70	273.1	0.595	15.11	-	-	-	-	SB	SB	SB
11 3/4	42.00	298.5	0.333	8.46	S	-	-	-	-	-	-
	47.00	298.5	0.375	9.53	-	SB	-	-	-	-	-
	54.00	298.5	0.435	11.05	-	SB	-	-	-	-	-
	60.00	298.5	0.489	12.42	-	SB	SB	SB	SB	SB	SB
13 3/8	48.00	339.7	0.330	8.38	S	-	-	-	-	-	-
	54.50	339.7	0.380	9.65	-	SB	-	-	-	-	-
	61.00	339.7	0.430	10.92	-	SB	-	-	-	-	-
	68.00	339.7	0.480	12.19	-	SB	SB	SB	SB	SB	SB
	72.00	339.7	0.514	13.06	-	-	SB	SB	SB	SB	SB
16	65.00	406.4	0.375	9.53	S	-	-	-	-	-	-
	75.00	406.4	0.438	11.13	-	SB	-	-	-	-	-
	84.00	406.4	0.495	12.57	-	SB	-	-	-	-	-
18 5/8	87.50	473.1	0.435	11.05	S	SB	-	-	-	-	-
20	94.00	508.0	0.438	11.13	SL	SLB	-	-	-	-	-
	106.50	508.0	0.500	12.70	-	SLB	-	-	-	-	-
	133.00	508.0	0.635	16.13	-	SLB	-	-	-	-	-

S = Short Round Thread L = Long Round Thread B = Buttress Thread

Tubing

Sizes and Grades

Outside Diameter	lb/ft		Outside Diameter	Wall Thickness		Type of End-Finish						
	T&C			t		Grade						
	Non Upset	Upset		mm	in	mm	H-40	J-55	L-80	N-80	C-90	T-95
2 3/8	4.00	-	60.3	0.167	4.24	N	N	N	N	N	N	-
	4.60	4.70	60.3	0.190	4.83	NU	NU	NU	NU	NU	NU	NU
	5.80	5.95	60.3	0.254	6.45	-	-	NU	NU	NU	NU	NU
	7.35	7.45	60.3	0.336	8.53	-	-	U	-	U	U	-
2 7/8	6.40	6.50	73.0	0.217	5.51	NU	NU	NU	NU	NU	NU	NU
	7.80	7.90	73.0	0.276	7.01	-	-	NU	NU	NU	NU	NU
	8.60	8.70	73.0	0.308	7.82	-	-	NU	NU	NU	NU	NU
	9.35	9.45	73.0	0.340	8.64	-	-	U	-	U	U	-
3 1/2	7.70	-	88.9	0.216	5.49	N	N	N	N	N	N	-
	9.20	9.30	88.9	0.254	6.45	NU	NU	NU	NU	NU	NU	NU
	10.20	-	88.9	0.289	7.34	N	N	N	N	N	N	-
	12.70	12.95	88.9	0.375	9.52	-	-	NU	NU	NU	NU	NU
4	9.50	-	101.6	0.226	5.74	N	N	N	N	N	N	-
	10.70	11.00	101.6	0.262	6.65	U	U	U	U	U	U	-
4 1/2	12.60	12.75	114.3	0.271	6.88	NU	NU	NU	NU	NU	NU	-

N = Non-Upset Tubing U = External-Upset Tubing

Oil and Offshore

Manufacturer and Products & Equipment list

Name of Company	Products Description	Name of Company	Products Description
ABB	Motor, control parts	Oldham	Gas Detector
ARENDAL	Valve	Cooper Cameron	Valve
Alfa Laval	Heat Exchanger, Oil Separator	Hawk	Hydraulic Spinmaster Pipe Spinner
Bray Valve	Butterfly Valve	Zollern	Gear Box
Burgess	Mud Handling Systems	Flender	Gear Box
DESMI	Water Pump	Dreggen	Crane parts
Halco	Mud Pump	Mat King	Matting
Brandt	Mud Agitator	Derrick	Shale Shakers
Maritime Hydraulics	Top Drive	Advanced Valve	Rubber Valve
Metaris	Gear Pump	Strainstall	Anchor winch monitor system
Rolls-Royce	Marine Engine	HDI	Choke control panel
Nautronix	Marine Phone	Imperialeastman	Fitting
Liebherr	Crane parts	Siemens	PLC, motor
Unitor	Fire Hose	Sieger	Gas Sensor
Schat-Harding	Lifeboats	Demco	Valve
Evak	Vacuum Toilet collecting System	Normar	BOP Elevator
Viciinay	Swival Shackle	World wide Metric	Valve
Mecman	Hydraulic Parts	Wartsila	Engine
Westinghouse	Jacking up motor	Detroit	Engine
KSB	Pump	EEC	Choke control panel
S&N pump	Pump	Strombero	Motor
Allweiler	Oil Pump	Electrolux	Vacuum Sewage system

Plumbing and Heating Supplies

Wells Plumbing and Heating Supplies, INC .(WELLS) is a leading importer and distributor of a broad line of plumbing and heating products used principally in home improvement, remodeling, and repair as well as residential and commercial construction.

Wells' mission is to provide the industry and profession of residential and commercial improvement and construction with competitive, first-rate products, services, and technological solutions through thorough market research and commitment to global view of the development of the industry. Since its establishment and operation in 2003, wells has successfully built up an extensive distribution network throughout the Chicago metropolitan area, experiencing a fast growth in revenue. As Well's moves into its next phase of its development, its leaders have decided to advance its continued expansion through accelerating internal growth, capitalizing on the economics of scale of its distribution network, and leveraging our sourcing capability in China to further entrench our competitive advantage. By pursuing these initiatives, Wells seeks to become one of the best suppliers of plumbing and heating products in the State of Illinois. As a result of a globalization, there is an increasing demand to provide the market with the highest quality of products and services at a competitive price. To do so, Wells has established an office in the City of Shunde, Province of Guangdong, People's Republic of China, to reinforce its sourcing efforts in China.



Pipes, Tubings, & Insulations



Casting Iron Pipes



Copper Pipes & Tubes



Plastic Pipes & Tubes

Pipe Insulation (Fiber or Foam)



Malleable Pipes (Black or Galvanized)



Water Service copper pipe Type K



Valves



Full Port Ball Valves

Fireplace Gas Log Valves



Brass Gate Valves

Water Supply Valves



Gas Valves

Hose Bibbs



Swing & Spring Check Valves



Boiler Drains

Radiator Valves



Miscellaneous Valves

Pumps, Sump Basins & Accessories

- Ejector Pumps
- Sump Pumps
- Booster Pumps
- Basins
- Accessories

Roof Flashing

- Aluminum
- Neoprene
- Galvanized
- Thermoplastic

Tools, Torches, & Accessories

- Gas
- Hand & Power Tools
- Test Equipments
- Tool Boxes
- Prime Extention Cords

Tubular & Supplies

- Supply Tubes
- Supply Valves
- Supply Fittings
- Tubular
- Escutcheons
- Waste & Overflows

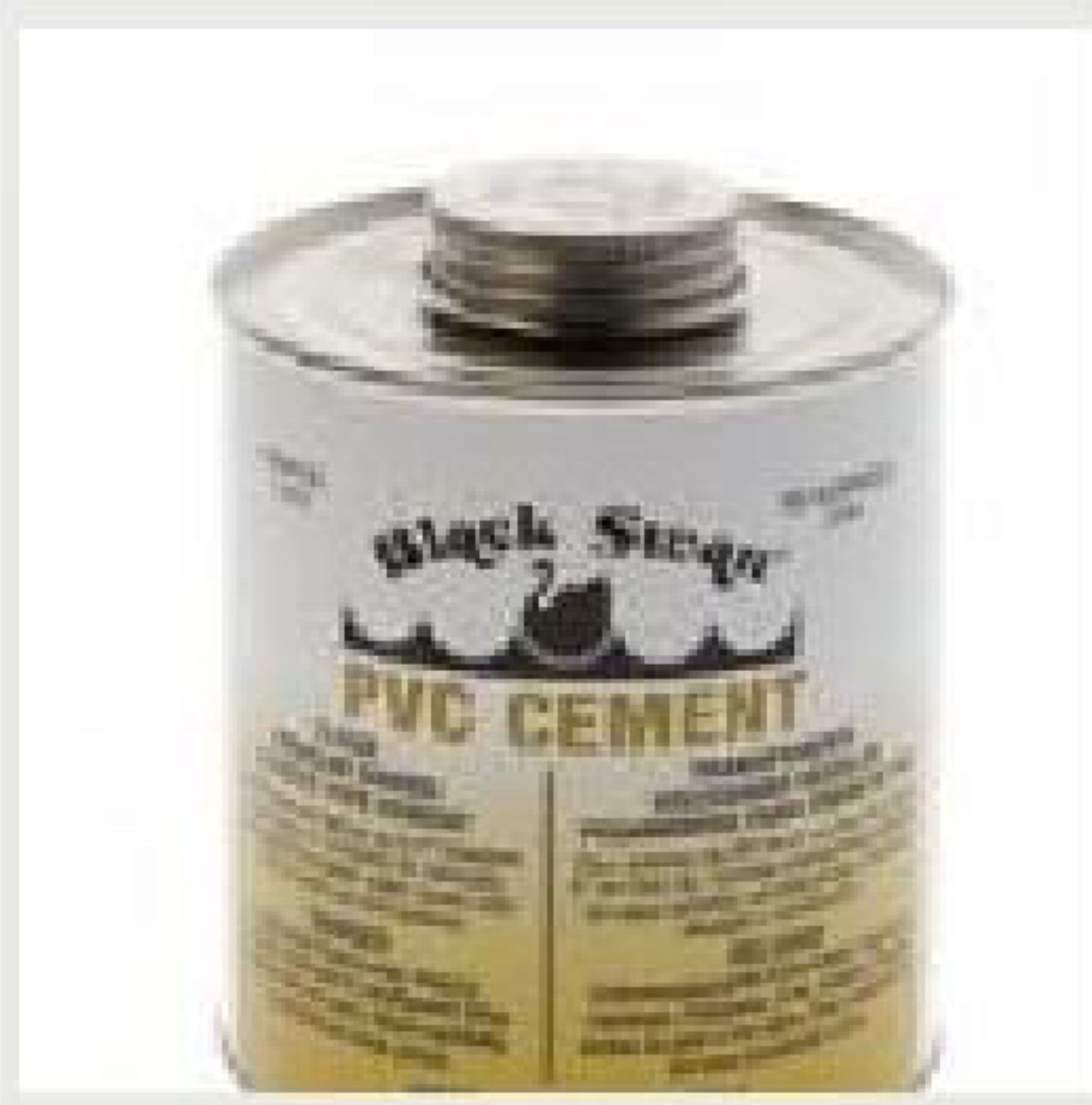
Fittings, Nipples

- Brass Fittings & Nipples
- Cast Iron Fittings
- Copper Fittings
- Insert Fittings
- Dielectric Unions
- Malleable Fittings & Nipples
- Malleable Nipples
- Plastic Fittings
- Plastic Specialties
- Rubber Couplings
- Water Service Fittings

Hangers, Hose Clamps, Stud Guards

- Hangers, Hooks, & Straps
- Hose Clamps
- Stud Guards
- Threaded Rods

Cements,Chemicals,Solder,Flux,Tape,Brush



Cements



Cleaners

Plumbers Putty

Fitting Brushes



Wax Rings

Flux



Silicone

Tapes



Solders

Line Cards



Cast Iron Soil Pipe & Fitting, Copper Pipe & Fitting (Pressure & DWV), Black Steel Pipe & Fitting, Full Port Ball/Gate Valve, Toilets



Booster Pumps



PVC Pipe, PVC Fitting, Drain Tile
PVC Pipes, PVC Fitting



Chemicals, Fitting Brushes



Blades, Torches, Pipe Cutter

**JACKEL ECO, AK
INDUSTRIES**

Pump Pits (Foaming, Plastic, Fiber Glass)



Lavatory, Kitchen and Shower Faucets

**MICHAEL WAGNER
& SONS, INC**

Zoeller Sump & Ejector Pumps



Commercial & Residential Water
Heater



Washing Machine Boxes, Ice Maker Boxes



CML Faucets & Flush Valves, Grease Traps, Floor Sink



Mixing Valves, Reducing Valves



Toilets, Lav Sinks



Steel Bath Tub



Laundry Tubs, Shower Bases



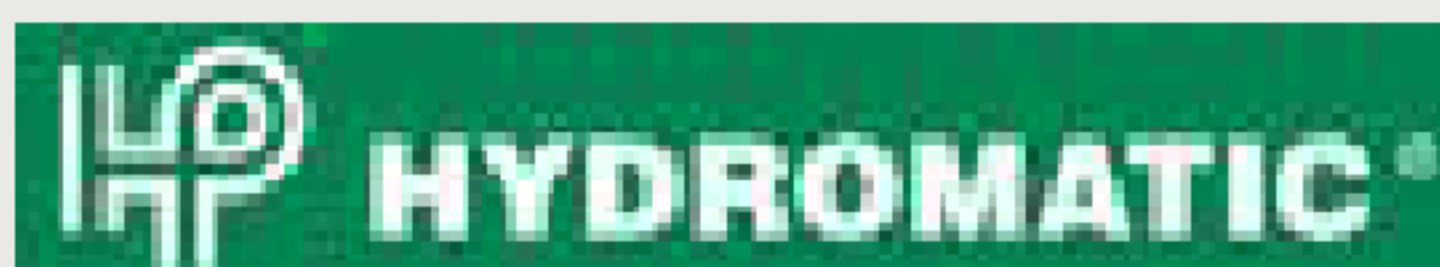
Fittings



Drinking Fountains, Water Coolers



Unistrut & Hangers , Drains and Cleanouts



Sumpro Pumps, Battery Back Up Pumps



UnderGround Gas Pipings, Screws, Tools

Investment Casting

Wells Plumbing and Heating Supplies, INC. investment casting plant professionally deal with the study and manufacturing of precision founding of investment. There is production plant of area of 3000m² and 180 workers. Insisting on the principal of meeting customers' need, we took the lead in setting up quality system according ISO9000 international standard. Our products are under strict control and inspection from raw material. semi-finished article to after-sale service process.

Main raw materials purchase from Japan, Taiwan, Italy, Australia, etc. Production and inspection equipment purchase from Japan, Switzerland, Taiwan, such as wax injection machine, automatic dewax system, melting furnaces annealing ovens, agglomeration ovens, milling and cutting machines, integer machines, spectrum analyst and measurements, etc.

We can provide Different kinds of parts for sewing machines, textile machines, Pneumatic tools, wires and cables, automobile accessories, knives, etc. totally more than 4000 kinds.

We can handle Carbon steels, Nickel Chromium Molybdenum Steels, Carbon Tool Steels, Alloy Tools Steels, Stainless Steels, copper, etc. Monthly output:1,200,000pcs mainly providing high quality products for famous machines and tools company.



Die Casting

Wells Plumbing and Heating Supplies, INC. Die-casting plant is located in south of China, one and half hour driving distance from Shanghai city, it is specialized in the die-casting of aluminum alloy and zinc alloy. Our die-casting workshop is 5,800 square meters and the total staff consists of 160 persons.

Our plant has world advanced die casting machines, including two sets of ITALPRESSE 800 T of ITALPRESSE INDUSTRIE, one set of 630 T machine and one set of 400 T machine from HongKong L.K Machinery, one set of 500 T machine and one set of 250 T machine made by domestic manufacturers, as well as complete set of shot blasting and polishing after-treatment equipment.

In addition, our plant can design and manufacture the molds in house. We had imported Metalscan 2500 N spectrograph from ARUN of UK which is used for strict control of the raw materials and products.

Our plant established integrative quality guarantee system. In September 2000, we got ISO9002 International Quality Control System Certificate.

Our plant production capacity is 3,000 tons of aluminum alloy die-casting products for engine case of motorcycle, case of wind cooling diesel, textile machinery, electric tools, automobile, electric machine, furniture, lamp etc.



Sand Casting

WELLS Ductile Iron Foundry is your reliable source for Ductile iron, Alloy iron, Gray iron, and Heat-resistant steel or Alloy steel. We pour to different international standards. The cast process that we use covers Resin Chemically Bonded Sand Cast, Resin Shell Cast, and Green Sand Cast. We can offer material analysis, heat treatment, non-destructive testing, proof or full machining. Quality and Service is our emphasis! The foundry monthly capacity is over 250 tons, with total occupied land size as 8000m³. Its products cover different industries like automobile, construction, machinery, ship and etc.



Gear & Machine Parts

Wells Plumbing and Heating Supplies, INC. Supplies Gear plant, established in 1992, Our workshop cover an area of 64000 square meters, staff over thousands of people. Our plant can provide forging and press, machinery cutting, it has to be extremely better advantage on routine technology grasp heat treatment, etc. Especially cold to push technology, special course surpass the domestic same trade by heat treatment technology, etc.

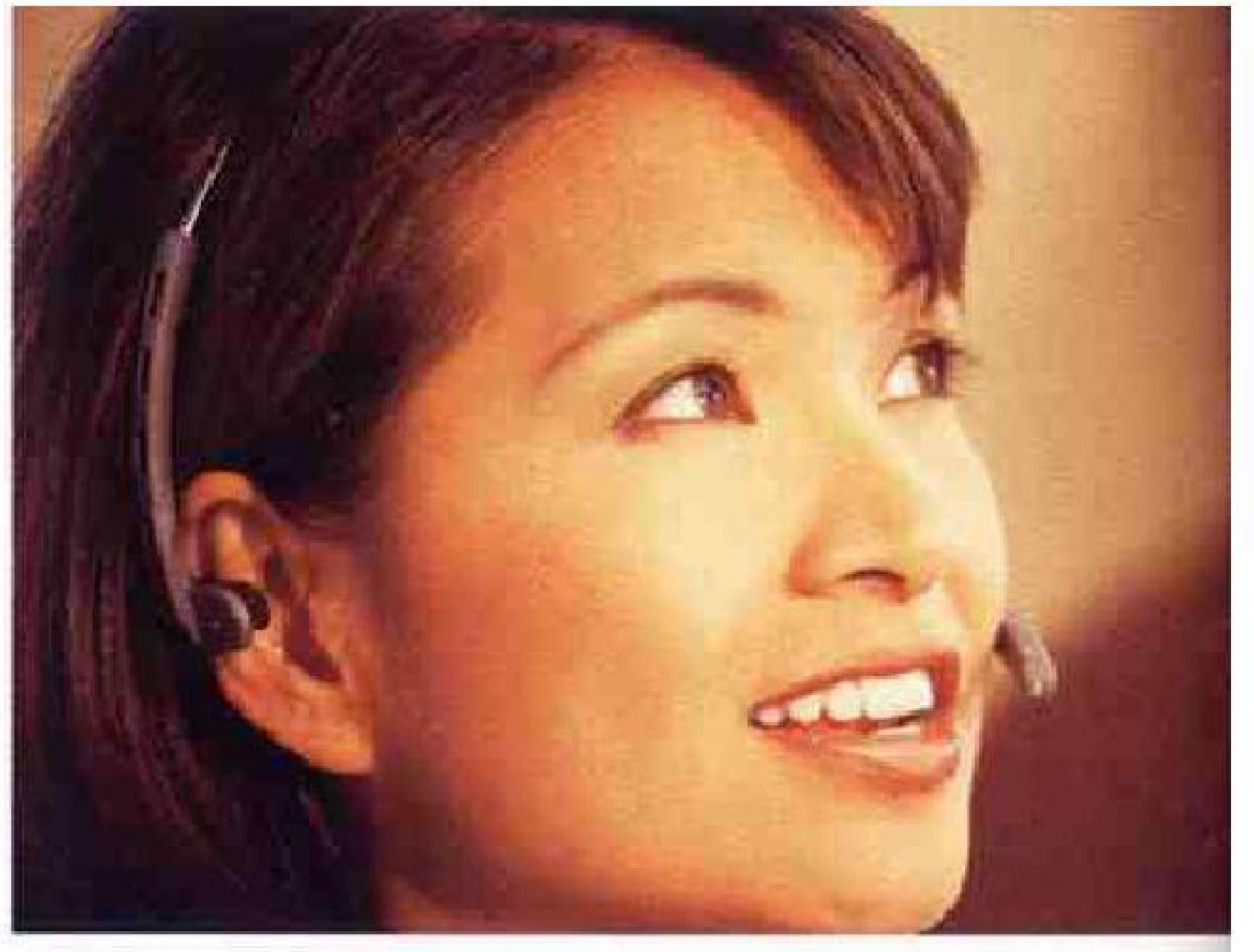
Our plant got the ISO 9002 international quality system in October of 2000.



Support

Wells Plumbing and Heating Supplies, INC. established the globally locations to connect with our customers, not only for sell our products, but also provide our best service and support to our customers.

We believe that providing best services to our customers are the key success factors. Our support team got well trained to provide the capable to solve the problems fast and efficiency. Our sales engineer also have engineering background, they understand what the customer really need and are capable in providing technical solutions and on-site trouble-shooting.



Wells Plumbing & Heating Supplies

Head Office

916 W 21st ST, Chicago, IL, 60608

Tel: 1-312-850-1500

Fax: 1-312-850-3457